

In-Grade Dynamic Glow Source | designed by UEBERSEE

O112-POWERSEED-VCOLOR

ORGANICLIGHTINGSYSTEMS.COM



SPECIFICATIONS

LUMINAIRE | SOURCE | LIGHT DISTRIBUTION | HOUSING

RGB LED variable color-changing, drive-over, in grade light fixtures, for in-ground or in-concrete installation. 14.5" D x 7.3" deep.

Featuring unique facia designs by UEBERSEE, PROF. NIKOLAUS HAFERMAAS.

CONTROL | INDEPENDENT | PROJEC- WIDE

Luminaires designed to be "off the grid" with a built-in color changing program providing dynamic glow effects as the daylight sensors detect the onset of dusk.

An optional atomic clock can also synchronize startup. A connection for low voltage supply is provided for applications where daylight is restricted.

ELECTRICAL | CONNECTION | POWER | OPERATION

Self-powered by integral battery charged daily by integral solar panels (standard).

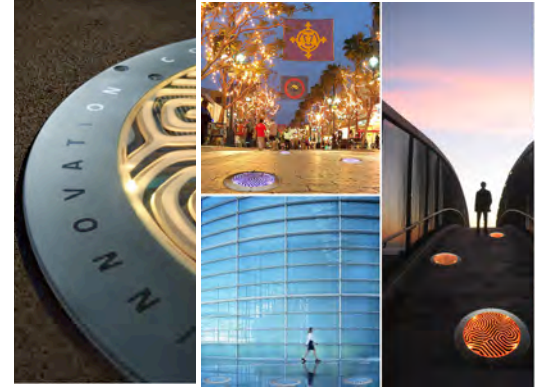
Optional connection to electrical grid available with input 90-264VAC. 12VDC secondary to lamps via on-board power-data supplies. Standard control connection is (CAT5) in and out "daisy-chained" between luminaires. Max power consumption 8.55 watts per luminaire . Connect for 0.7 amps per luminaire.

Operating temperature range is -200 to +380 C (-40 to 1000 F). ETL ,CE listed for exterior conditions, IP67.

CATALOG NUMBER BUILDER:

[O112-POWERSEED-VCOLOR]

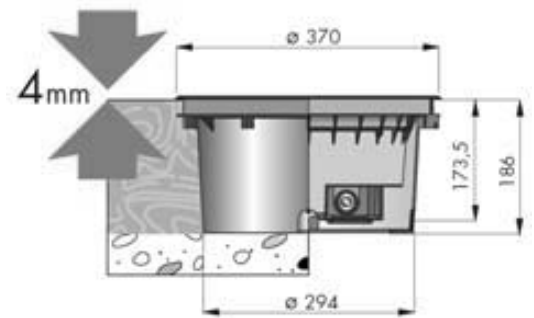
[LAMP COLOR]	[COLOR]	[OPTIONS]
RGB- Red, Green, Blue	SLZ-Silver anodized	SP-Selfpowered(standard)
CPL- Custom population	RAL-Custom color (provide RAL number)	SGSG-Smart grid/standard grid con- nection
	CBT-Custom bezel treat- ment- color (consult factory)	CPTT-Custom Pattern (consult factory-provide image file)
		IDA-Independant digital ad- dressing capability for DMX



Landscape array concept



Glass face treatment examples



ORGANIC LIGHTING SYSTEMS may change or enhance this product without notice. Check to ensure product information is current.

Specification build: IL-O112-PowerSEED-VCOLOR-v1.0 | Page 1 of 1 | 02/2010

ORGANIC LIGHTING SYSTEMS INC. 511 N. Virginia Avenue, Azusa, CA 91702 | t: 626-969-6140 | f: 626-609-4288 | projects@organiclightingsystems.com

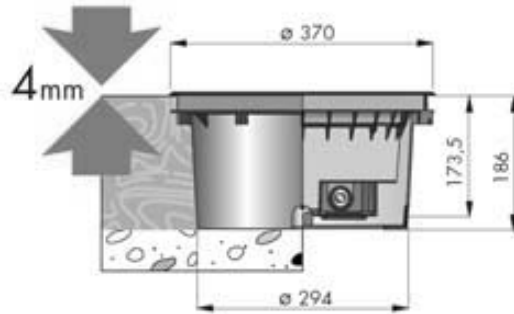


O112-POWERSEED-V-COLOR

ORGANICLIGHTINGSYSTEMS.COM

SHORT INSTALLATION INSTRUCTIONS | IP67

Drive over, in grade fittings, for in-ground or in-concrete installation. The light fittings are built to sustain motor vehicles weighing 2,000 kg at a maximum speed of 20Km/h. For drive over installation, ensure that the cement structure is able to sustain similar loads.



1. Bury the light well flush to the plastic frame edge: fig.1
2. Fix the PowerSEED light fitting to the installation box: fig.2
3. Close the lens by tightening uniformly the fastening screws to obtain an even pressure on the gasket: fig.3.
Ensure that the gasket area is free from sand or soil before closing the light fitting.

